

# Thompson County Park Master Plan and Natural Resources Management Plan Task 3 Concept Review

December 20, 2018

# Agenda



Efficient, Effective, Responsive

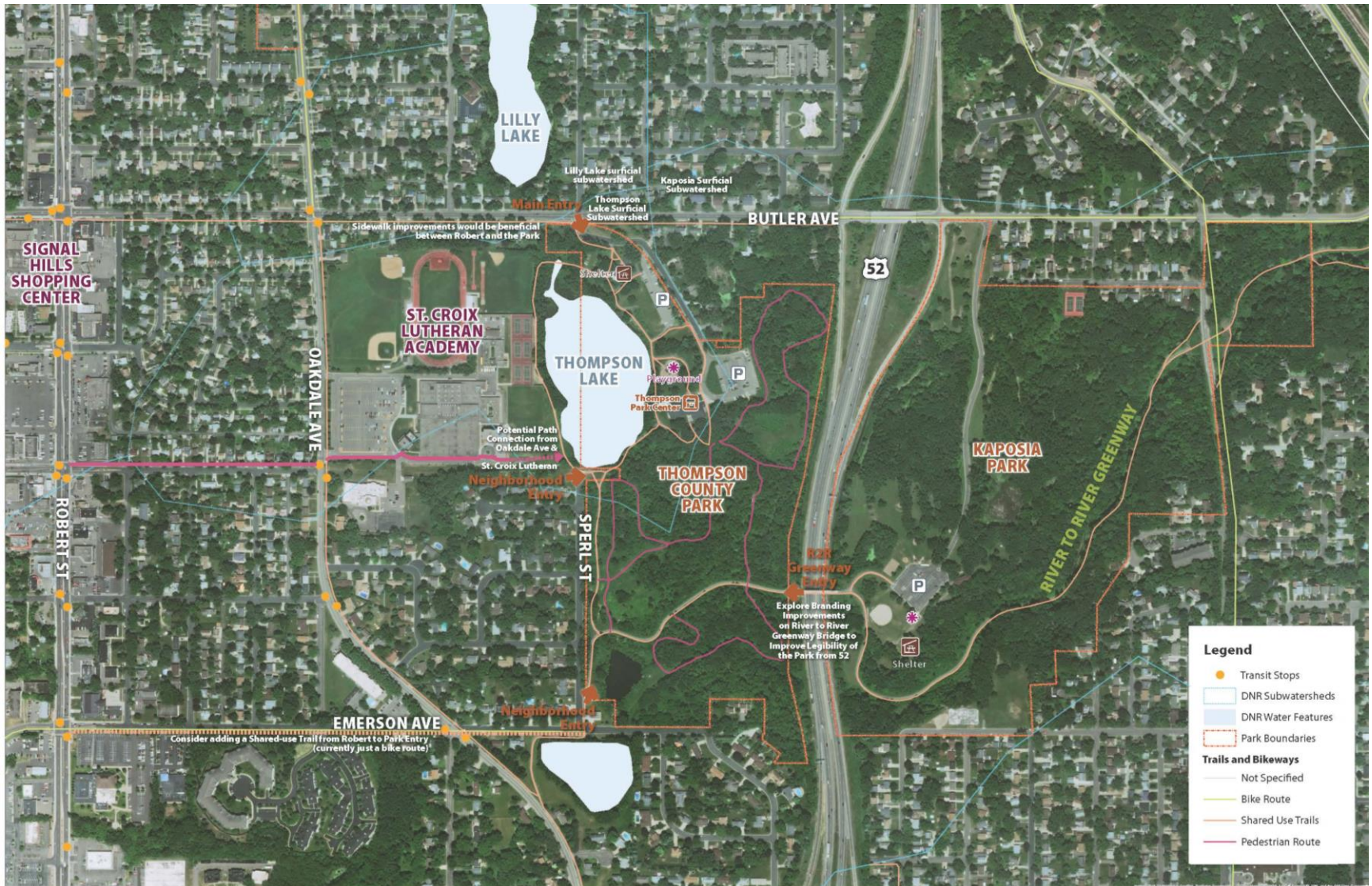
- Context Map
- Presentation of Concepts
- Confirmation of Concept Components
- Input on Concept



# Context Map



Efficient, Effective, Responsive



# Interpretive Theme



Efficient, Effective, Responsive

The interpretive theme for Thompson County Park was developed through research, on-site assessment, and a staff and stakeholder workshop.

**At Thompson County Park, people connect with nature and each other through recreation, exploration, and social gatherings, building a strong and resilient community that is committed to stewardship and sustainability.**

# Subthemes



Efficient, Effective, Responsive

- ***Recreation***

Play in the park in all seasons. Here, people of all ages can bike and hike, sled and skate. Whether with a group or on their own, Thompson County Park offers visitors a variety of active and passive recreational opportunities year-round.

- ***Social Gathering***

Find community here. Gather with family and friends. Join a new group or try something new. People come here for events and gatherings throughout the year—to connect and reconnect with known and new communities.

# Subthemes



Efficient, Effective, Responsive

- ***Community Events***

What community events do you have in different seasons? What can I do here with a small group and a large group?

- ***Natural Resources***

Be a park steward. Here, people learn to be environmental stewards and take those lessons home. Because of its size, location, and history, this urban park provides opportunities for bird-watching, nature walks, and habitat restoration.



- ***Cultural History***

You are part of a bigger story. People have been here, in this place, for thousands of years. What is now a park was once a farm, home, and haven.

# Interpretive Media



Efficient, Effective, Responsive

## Self-Guided Interpretation

- Interpretive signs
- Interactive signs
- Audio posts
- Tactile elements
- Integrated landscape elements
- Mobile app



Tactile elements



Audio posts



Integrated landscape elements

Copyright 2010 Dakota County



# Interpretive Media



Efficient, Effective, Responsive

## Guided Interpretation

- Interpretive Programming
- Events



Interpretive programming

# Concept A



Efficient, Effective, Responsive



## Key Statistics

- 83% of park remains natural
- 1.4 miles of natural surface trails
- 3 miles of paved trails
- 4 new picnic shelters
- 20,000 sf nature play area
- 38 acres of restoration



# Concept A



Efficient, Effective, Responsive



## Natural Resources

### Primary

- Shoreline restoration
- Forest regeneration
- Savanna restoration
- Oak forest restoration

### Supportive

- Infill buffer planting
- Stormwater management
- Management on invasive plant species

# Concept A



Efficient, Effective, Responsive



## Lake Features

- New pier
- Shore fishing
- Paddle access
- Sand play

## Activity Area Features

- New picnic shelters
- Amphitheater seating
- Flowering play lawn
- Sensory garden & walking loop
- Inclusive natural playground
- Nature play area
- Small Playground

## LEGEND

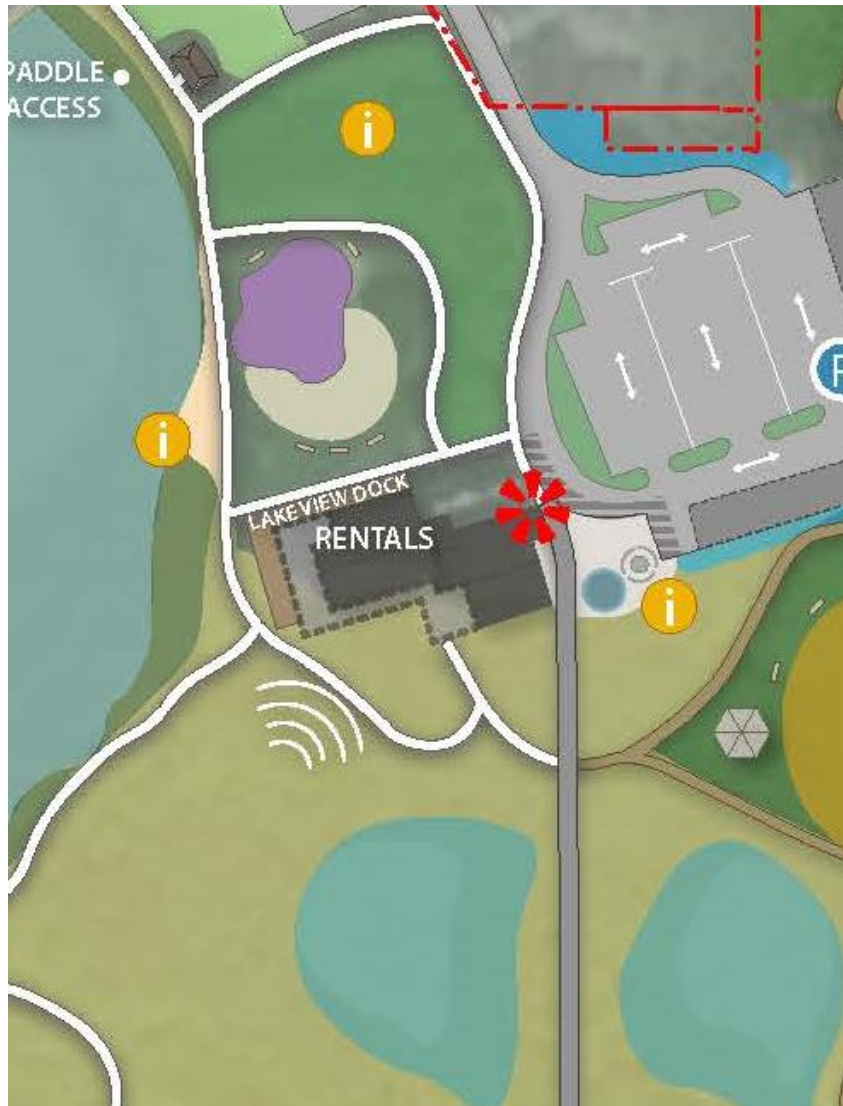
- PARK BOUNDARY
- RIVER TO RIVER GREENWAY
- NATURAL SURFACE TRAILS
- PAVED TRAILS
- i INTERPRETATION
- ART INSTALLATIONS



# Concept A



Efficient, Effective, Responsive



## Lodge Expansion

- Public welcome area/visitor center
- Greeting desk
- Equipment rental/storage
- Interior restrooms that are open to the public
- Small group rental and education space
- Indoor/outdoor connection
- Outdoor gathering space
- Storage expansion
- Comfort room
- Commercial food production kitchen
- Offices

# Concept A



Efficient, Effective, Responsive



## Lodge Features

- Lake view dock
- Food truck parking
- Entry Plaza
- River to River Greenway Trailhead
- Rentals

## Sledding Hill Features

- Lighted
- New shelter
- Bench seating

## LEGEND

- PARK BOUNDARY
- RIVER TO RIVER GREENWAY
- NATURAL SURFACE TRAILS
- PAVED TRAILS
- i INTERPRETATION
- ART INSTALLATIONS

# Concept A



Efficient, Effective, Responsive



## Discovery Features

- Savanna loop trail
- Informal foot path to feature art piece
- Lighted restoration showcase
- Land bridge
- Neighborhood gateway

## LEGEND

- PARK BOUNDARY
- RIVER TO RIVER GREENWAY
- NATURAL SURFACE TRAILS
- PAVED TRAILS
- i INTERPRETATION
- ART INSTALLATIONS



# Concept A



Efficient, Effective, Responsive



## Oak Forest Features

- Expanded Trails
- Shelter
- Simon's Ravine overlook
- Ravine bridge

## LEGEND

- PARK BOUNDARY
- RIVER TO RIVER GREENWAY
- NATURAL SURFACE TRAILS
- PAVED TRAILS
- i INTERPRETATION
- ART INSTALLATIONS



# Concept A



Efficient, Effective, Responsive

## Wayfinding Opportunities

### WAYFINDING DIAGRAM



VEHICLE WAYFINDING



ENTRANCE WAYFINDING



TRAILHEAD WAYFINDING



TRAIL WAYFINDING



# Concept A



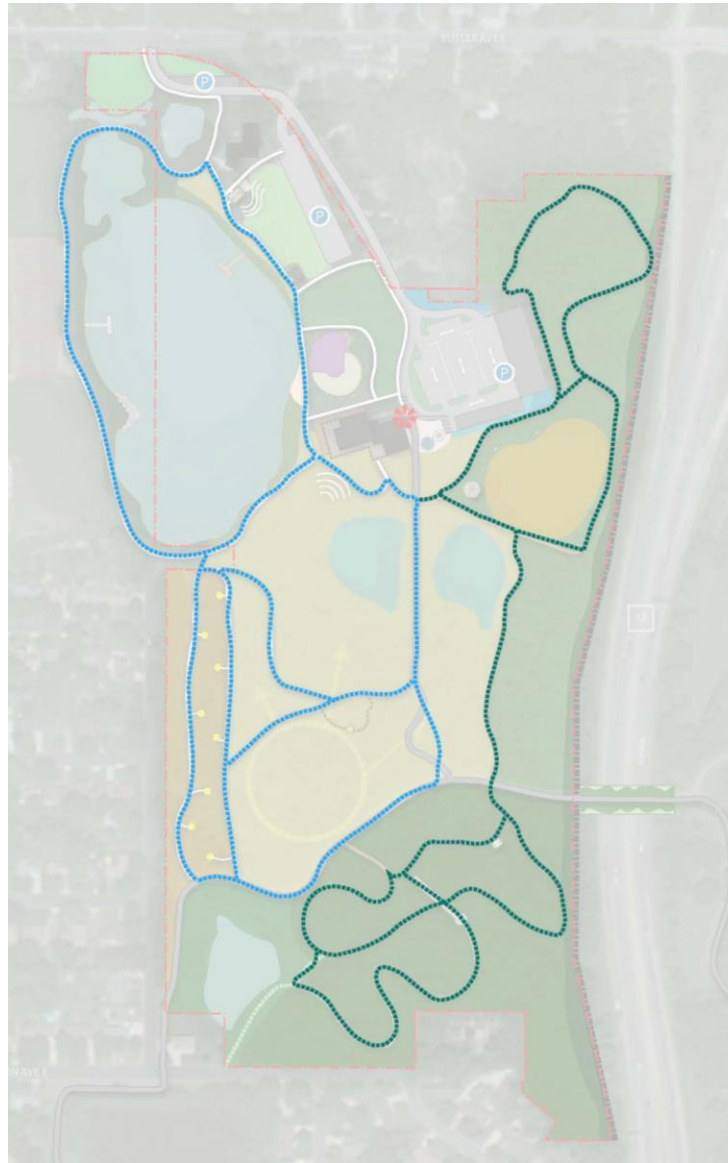
Efficient, Effective, Responsive

## Winter-Use Opportunities

- Walking Loop
- Snowshoe Loop
- Lighted Walking Loop
- Lighted Sledding Hill

WINTER USE DIAGRAM

- WINTER WALKING LOOP
- WINTER SNOWSHOE LOOP



# Concept B



Efficient, Effective, Responsive



## Key Statistics

- 79% of park remains natural
- 1 mile of natural surface trails
- 2.3 miles of paved trails
- 9 new picnic shelters
- 26,000 sf nature play area
- 35 acres of restoration



# Concept B



Efficient, Effective, Responsive



## Natural Resources

### Primary

- Shoreline restoration
- Forest regeneration
- Savanna restoration
- Oak forest restoration

### Supportive

- Infill buffer planting
- Stormwater management
- Management on invasive plant species



# Concept B



Efficient, Effective, Responsive



## Lake Features

- Lighted lake loop
- Display spaces with story walk
- Shore fishing
- Paddle input
- New pier

## Activity Center Features

- Amphitheater
- Play lawn
- Stage/screen set-up
- Hammock grove
- Enhanced picnicking

## LEGEND

- PARK BOUNDARY
- RIVERTO RIVER GREENWAY
- NATURAL SURFACE TRAILS
- PAVED TRAILS
- i INTERPRETATION
- ★ DISPLAY SPACES/STORY WALK WITH SEATING
- ECOSYSTEM EXPLORATION LOOP

# Concept B



Efficient, Effective, Responsive



## Lodge Expansion

- Public welcome area/visitor center
- Greeting desk
- Equipment rental/storage
- Interior restrooms that are open to the public
- Small group rental and education space
- Indoor/outdoor connection
- Outdoor gathering space
- Storage expansion
- Comfort room
- Commercial food production kitchen
- Offices

# Concept B



Efficient, Effective, Responsive

## Sledding Hill Features

- Lighted
- Group fire pit

## Lodge Features

- Sunset Plaza
- Rentals
- Food truck parking

## LEGEND

- PARK BOUNDARY
- RIVERTO RIVER GREENWAY
- NATURAL SURFACE TRAILS
- PAVED TRAILS
- INTERPRETATION
- DISPLAY SPACES/STORY WALK WITH SEATING
- ECOSYSTEM EXPLORATION LOOP





# Concept B



Efficient, Effective, Responsive



## Discovery Features

- Pollinator Promenade loop
- Ecosystem restoration loop
- Boardwalk

## Farmstead Interpretative Play and Picnic Grounds Features

- Interpretive and natural playground (inclusive)
- Nature play area
- Play in nature
- Picnic shelters/grounds
- Observation tower
- River to River Greenway Trailhead

## LEGEND

- PARK BOUNDARY
- RIVER TO RIVER GREENWAY
- NATURAL SURFACE TRAILS
- PAVED TRAILS
- i INTERPRETATION
- ✱ DISPLAY SPACES/STORY WALK WITH SEATING
- ECOSYSTEM EXPLORATION LOOP

# Concept B



Efficient, Effective, Responsive



## Other Site Features

- Cascading water feature
- Simon's Ravine natural surface trail
- Flowering picnic lawn
- Infill buffer planting
- Sound wall

## LEGEND

- PARK BOUNDARY
- RIVERTO RIVER GREENWAY
- NATURAL SURFACE TRAILS
- PAVED TRAILS
- i INTERPRETATION
- ★ DISPLAY SPACES/STORY WALK WITH SEATING
- ECOSYSTEM EXPLORATION LOOP

# Concept B

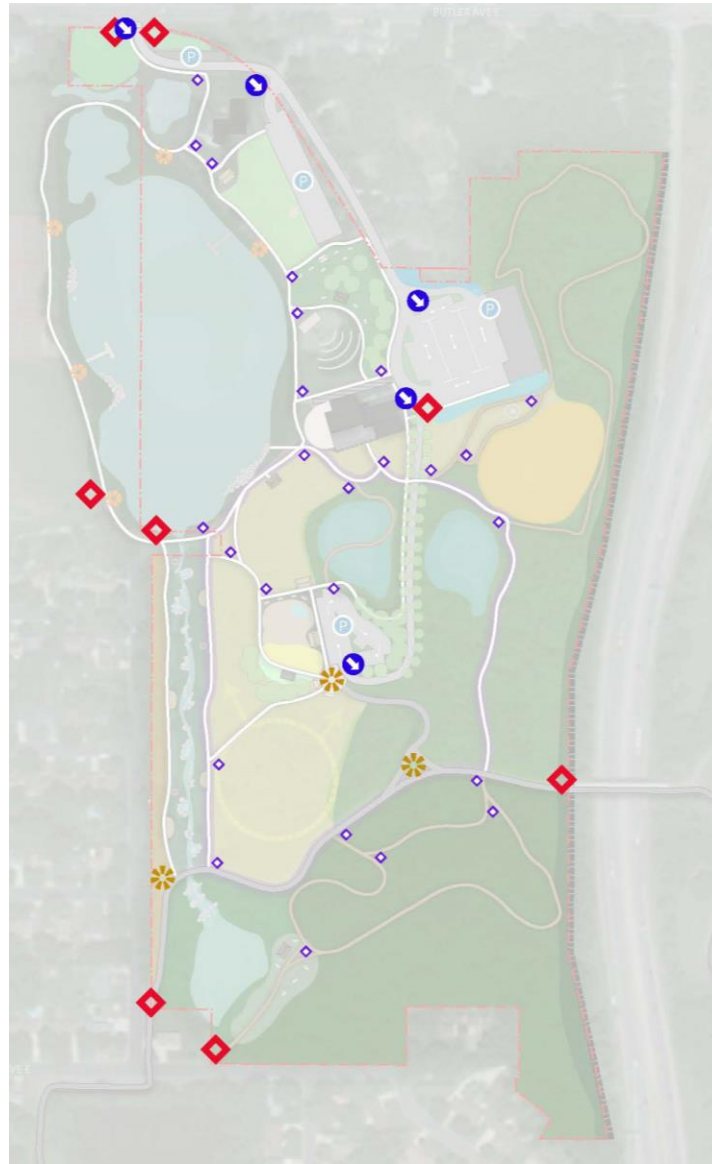


Efficient, Effective, Responsive

## Wayfinding Opportunities

### WAYFINDING DIAGRAM

-  VEHICLE WAYFINDING
-  ENTRANCE WAYFINDING
-  TRAILHEAD WAYFINDING
-  TRAIL WAYFINDING





# Concept B



Efficient, Effective, Responsive

## Winter-Use Opportunities

- Walking Loop
- Snowshoe Loop
- Lighted Walking Loop
- Lighted Sledding Hill

### WINTER USE DIAGRAM

■■■■■■■■■■ WINTER WALKING LOOP

■■■■■■■■■■ WINTER SNOWSHOE LOOP



# Concept Evaluation



Efficient, Effective, Responsive

**How effective are Concepts A and B at achieving the following Guiding Principles?**

Guiding Principle	Concept A	Concept B
Create a welcoming and safe environment		
Provide activity and purpose year round		
Promote social gathering		
Connect the community to the park		
Enhance the lake as a focal point		
Improve natural systems within the park and beyond the park boundary		
Inspire learning		
Reduce barriers to park access and use		

# Next Steps



Efficient, Effective, Responsive

## Upcoming Tasks for Planning Process

- Refinement of Concepts
- County Board Approval of Release of Concepts in January
- Community Engagement in late January and February
- Planning Commission Review of Preferred Concept in March/April



# Reference Slides

# Vision and Guiding Principles



Efficient, Effective, Responsive

## Vision

*Thompson County Park is a urban oasis that inspires people to participate in vibrant and healthy activities, is responsive to the community, and encourages people to discover nature.*

# Vision and Guiding Principles



Efficient, Effective, Responsive

## Guiding Principles

1. Create a welcoming and safe environment
2. Provide activity and purpose year round
3. Promote social gathering
4. Connect the community to the park
5. Enhance the lake as a focal point
6. Improve natural systems within the park and beyond the park's boundaries
7. Inspire learning
8. Expand and strengthen partnerships
9. Implement strategies for ongoing community feedback
10. Reduce barriers to park access and use